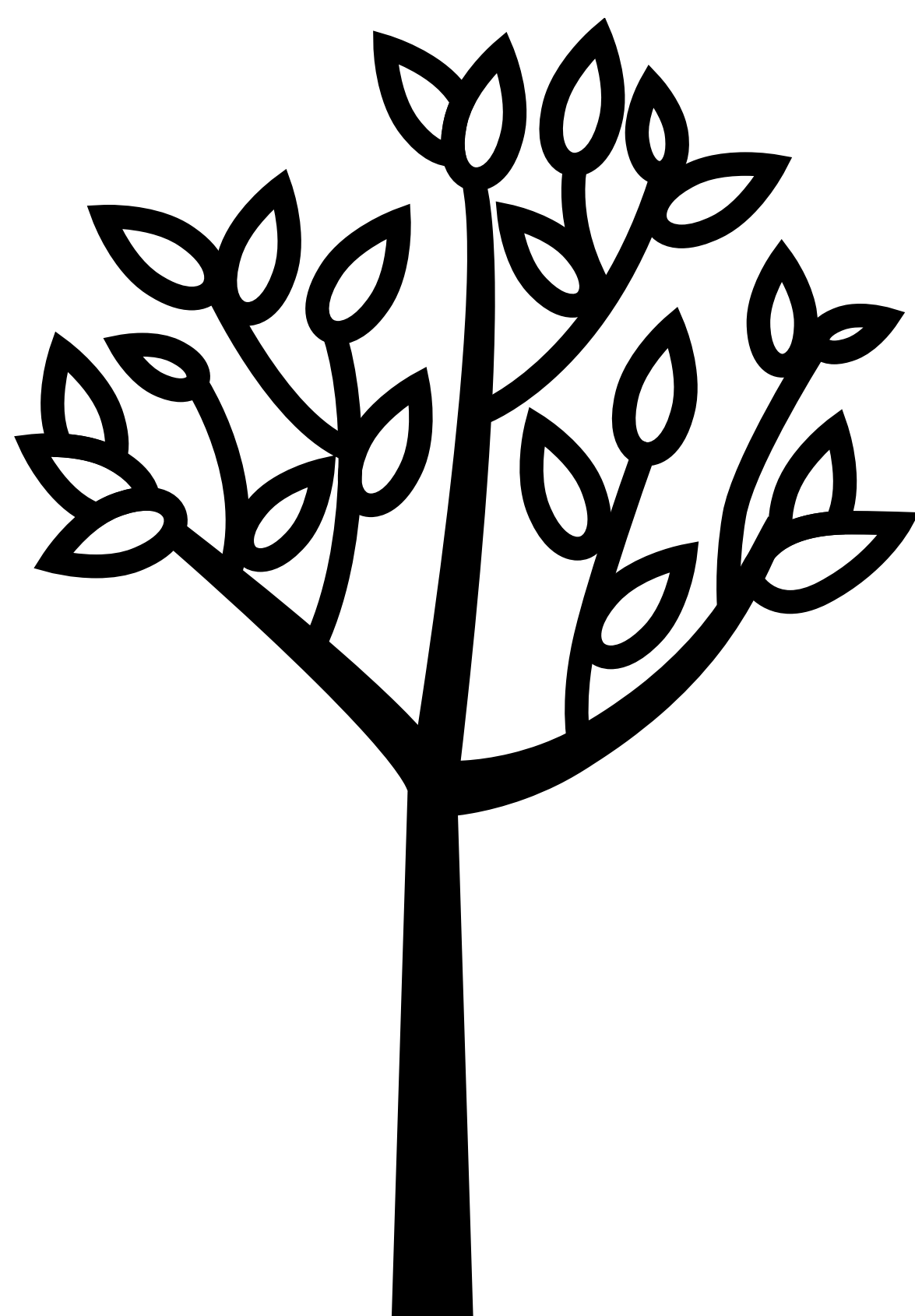
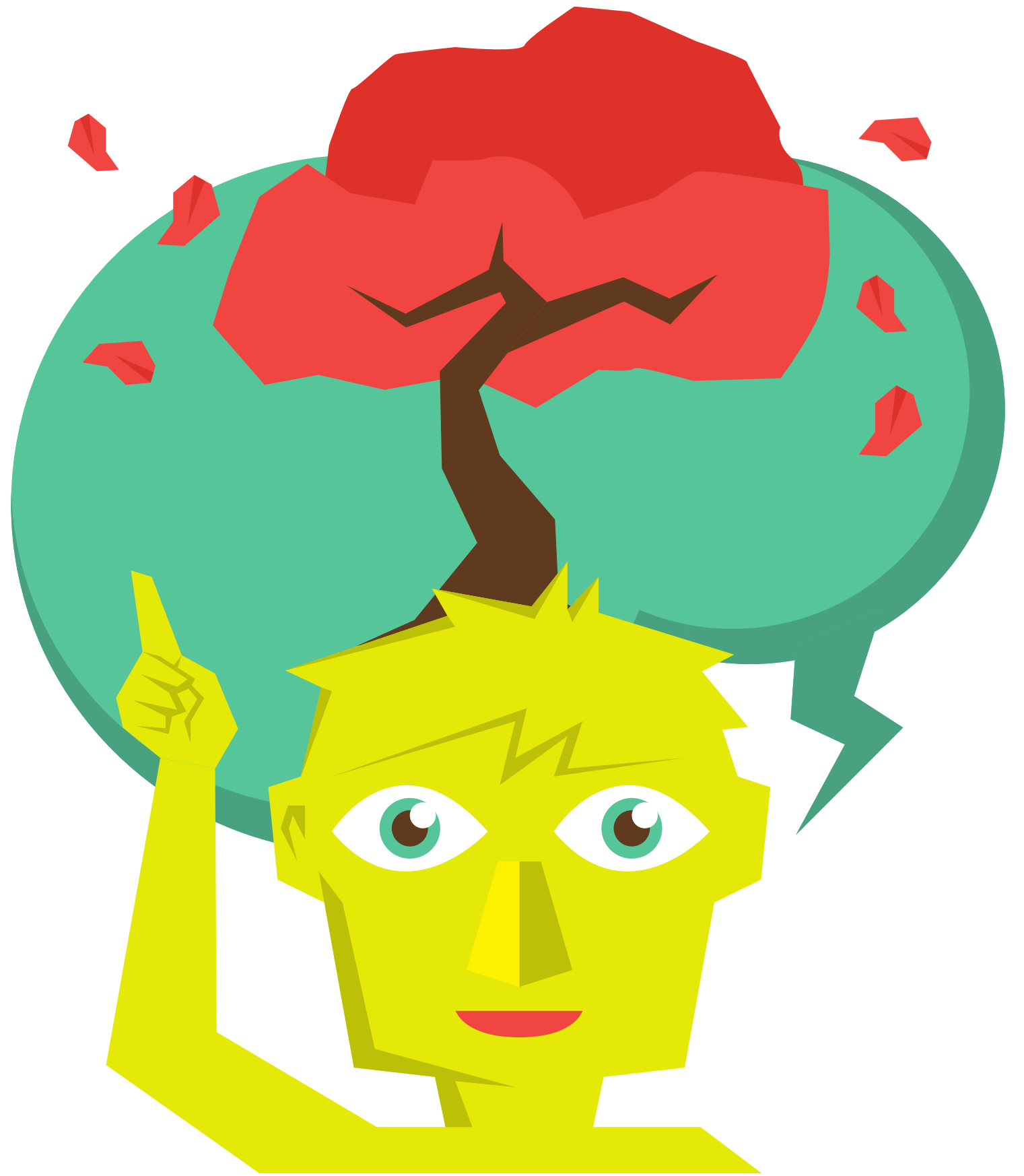


"You can tell each tree by its fruit. Do people pick grapes from bushes? Do they pick figs from thorns? In the same way, every good tree bears good fruit. But a bad tree bears bad fruit. A good tree can't bear bad fruit. And a bad tree can't bear good fruit. Every tree that does not bear good fruit is cut down. It is thrown into the fire. You can tell each tree by its fruit."

Matthew 7:16-20



Let's think a bit...



1. What are the trees in this story?
2. What are the fruit in this story?
3. How can we be trees that bear good fruit?

"You can tell each tree by its fruit." Matthew 7:20

